

Ask Aeries!

CALPADS

April 11, 2024

Host: Rikkilynn Hale

Presenter: Suzette Kellar

Moderators: Flaviola Cisneros and Stephen Burks



Question:

I would like to know how Aeries suggests we handle using the 0 school code logic when it comes to program records. Is this still a good practice to use, so we don't have to create multiple program records when students switch between our schools.

Answer:

Why is CALPADS not reflecting our program data for students when we have added a program record for each student? ↑

If your program data is not uploading correctly to CALPADS, check for the following possible causes:

1. Confirm the correct school number (PGM.SCL) has been entered for the program.
 - Using a school code of zero (0) in the program record, especially for open ended program records, ensures that the school code, program start date and end date will be properly updated in the SPRG extract from a student's enrollment record. When a student is transferring or matriculating to other schools within the district, the SPRG extract will submit the new school information.
 - If populating the school number in the program record instead of using zero (0), the school must be listed in Course History Institutions (CHI). The record ID number in CHI must be below 1000 and match the Aeries school code (STU.SC).
2. Confirm that the dates entered in the start and end dates reflect dates within the current school calendar.
3. Confirm the program start date is populated in the correct field.

<https://support.aeries.com/support/solutions/articles/14000128136-sprg-faqs#top>



Ask Aeries

Ask Aeries

Question:

Which Aeries reports are the best to help clean up data before it is submitted to CALPADS and how is it recommended to make the selections on those reports?

Do you have a repository of data validations?

Answer:

Aeries User Groups

<https://www.aeries.com/contact/>

Aeries User Groups

Communities and resources managed by Aeries users

Customer Moderated Listserv

The Aeries_Talk Listserv is not run by Aeries Software staff. It is moderated by Aeries users and should not be viewed as a mechanism for contacting Aeries Software for Aeries support. It is, however, a useful forum to seek feedback from your fellow Aeries users. To subscribe, please visit <https://groups.io/g/AeriesTalk>

Aeries Admins Users Group Slack Workspace

Formed by the members of the Network Professionals Forum session at the semi-annual Aeries conferences, the Aeries Admins Users Group (AUG) is run and moderated by Aeries users for general discussion purposes. Discussions are generally focused on project collaboration (crowdsourcing), technical inquiries (SQL, sysadmin, etc.), and policy/procedure management (best practices, data-driven decisions, Analytics, LCAP, etc.).

If you would like to participate in this Slack workspace, please join via the following link: <https://bit.ly/2mlkNNL>. Once you have joined, you can find the workspace at <https://aeriesaug.slack.com/>. For some help on using slack, please visit <https://slack.com/help/categories/360000049043>



Question:

What is the process for requesting SSIDs using the CALPADS matching tool?



Answer:

SSID Match Tool

<https://support.aeries.com/support/solutions/articles/14000067772-calpads-extracts-identifier-tab-ssid-match-process>

GMA

<https://support.aeries.com/support/solutions/articles/14000143143-ssid-identifier-match-tool-05-12-23>

Manual Process

<https://support.aeries.com/support/solutions/articles/14000137941-calpads-extracts-ssid-matching-tool>



Question:

Will there be a different process again for requesting SSIDs for Summer ELPAC testing?



Answer:

Summer ELPAC

<https://support.aeries.com/support/solutions/articles/14000130532-calpads-extracts-summer-elpac-testing-tab>

Known Issue with Summer ELPAC

<https://support.aeries.com/support/discussions/topics/14000012047>

Aeries Idea

<https://ideas.aeries.com/forums/925735-aeries-ideas/suggestions/46901344-calpads-summer-elpac-testing-tab-adjust-to-work>



Ask Aeries

Question:

Should you close out Program Records during EOY

Answer:

Does a district need to enter an end date each year on Participation records? ↑

The SPRG extract will auto-close all open Participation for Education Program Codes. Students can have one open record from previous years and the SPRG extract will auto-close the record. An end date on the Participation program record is not needed. The extract will populate an end date in the SPRG extract for Education Program Codes of 108, 113, 122, 174 and 185 and also 101 (504 Accommodation Plans) when the last school day is within 30 calendar days (or less) from the current date.

Some districts, in order to document the review of the record in CALPADS will place an end date on the open record and create a new one each year. This is a district data managing decision, but not required.

<https://support.aeries.com/support/solutions/articles/14000128136-sprg-faqs>



Ask Aeries

Question:

Why are zero records generating in the CRSC/SCSC extract for an Elementary District?

Answer:

File Reporting Matrix

Details School types and grade levels expected to report specific files related to EOY 1

| School Type | CRSC/ SCSC | SDEM | CTE/ WBLR |
|---|------------|------|-----------|
| Traditional (non-educational options schools) | Y | Y | Y |
| District Level Programs (Independent Study and Home Hospital Programs) | P | P | P |
| County Community | P | P | Y |
| District Community Day | P | P | Y |
| Youth Authority Schools (currently called Division of Juvenile Justice) | P | P | Y |
| Juvenile Court Schools | P | P | Y |
| Continuation High Schools | P | P | Y |
| Opportunity | P | P | Y |
| Alternative Schools of Choice | Y | Y | Y |
| State Special Schools | Y | Y | Y |
| Home and Hospital Schools(5) | P | P | Y |
| Department of Development Services | N | N | N |
| Department of State Hospitals | N | N | N |
| Special Education Consortium | P | P | Y(1) |
| Special Education | P | P | Y(1) |
| Non-Public School Group (0000001) (2) | N | N | N |
| Private School Group (0000002) (2) | N | N | N |
| ROP/ROC(4) | N | N | N |

| Grade Levels | CRSC/ SCSC | SDEM | CTE/WBLR |
|----------------------|------------|------|----------|
| Infants - IN | N | N | N |
| Toddlers - TD | N | N | N |
| Prekindergarten - PS | N | N | N |
| Kindergarten - KN | N | N | N |
| First Grade - 01 | N | N | N |
| Second Grade - 02 | N | N | N |
| Third Grade - 03 | N | N | N |
| Fourth Grade - 04 | N | N | N |
| Fifth Grade - 05 | N | N | N |
| Sixth Grade - 06 | N | N | N |
| Seventh Grade - 07 | P | P | P |
| Eighth Grade - 08 | P | P | P |
| Ninth Grade - 09 | Y | Y | Y |
| Tenth Grade - 10 | Y | Y | Y |
| Eleventh Grade - 11 | Y | Y | Y |
| Twelfth Grade - 12 | Y | Y | Y |
| Adult - AD | N | N | N |

Legend:

Y = Required: Schools are expected to submit data and will receive validation errors if data are not submitted.

N = No: Schools should NOT submit data.

P = Permitted: Schools are permitted, but not expected to submit data

| | | | | | |
|-----------------------------|-----|---|------------------------------|---------------|----------------------------------|
| End-of-Year (EOY) 1 2023-24 | N/A | <ul style="list-style-type: none">• Course Completion for Grades 7-12• Career Technical Education (CTE) Participants, Concentrators, Completers• Work-Based Learning Indicators | May 7, 2024 to July 26, 2024 | July 26, 2024 | July 27, 2024 to August 16, 2024 |
|-----------------------------|-----|---|------------------------------|---------------|----------------------------------|

What classes should be reported for EOY 1?

LEAs must submit information on courses that students have completed during the academic year (7/1/2023 to 6/30/2024). Courses in departmentalized classroom settings in grades 9-12 are expected. This includes:

- CTE Courses (7000 - 8999)
- Regular classes in the 9000 range
- College courses

<https://csis.fcmat.org/document/CALPADSResources/EOY-1-Reports-and-Certification.pptx>

<https://documentation.calpads.org/Training/EOYReportingRoadmap/#end-of-year-1-submission>



Question:

Why does the SDEM file only contain a few records for End of Year reporting?

Answer:

End of Year SDEM extract only pulls records for teachers that are teaching Departmentalized Courses for grades 7-12 (not Self-Contained Classrooms) that have records in the HIS table (transcripts)



Ask Aeries

Question:

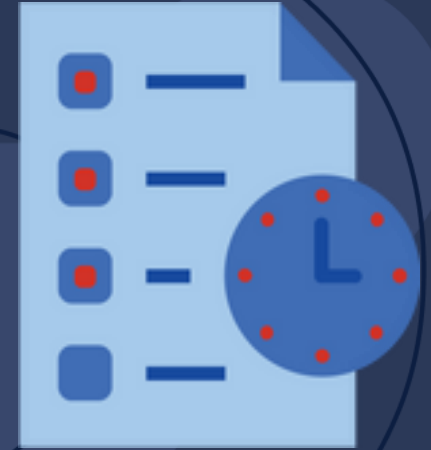
How do I close out my SDEM records for staff leaving at the end of the current year?

Answer: You can close them out manually in CALPADS

OR

The Fall 2 SDEM is extracting the inactive staff to close out any prior year records. There is logic in Aeries to close out any staff records from the prior year.

(More information on Slide 11)



Ask Aeries

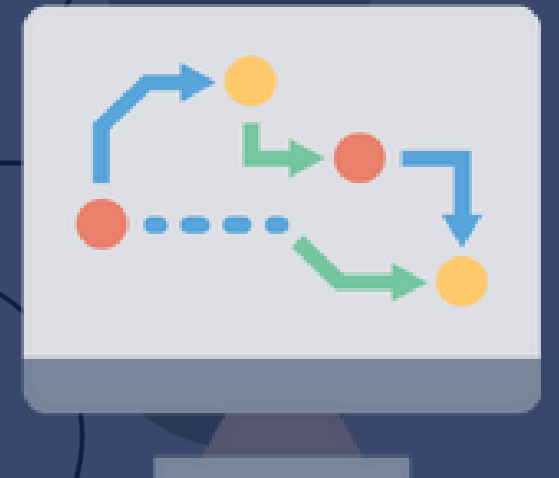
Questions:

How does Aeries pull files for CRSC/SCSC for EOY as opposed to CRSE/SCSE in Fall 2?

Answers:

For Fall 2 the CRSE/SCSE data is pulled based on the Course Attendance (CAR) records for students enrolled in courses on Information Day

For EOY, the CRSC/SCSC data is being pulled into the extracts based on records that are in transcripts (HIS)



Ask Aeries

Question:

Why is the SDEM in the Fall pulling staff that left in the prior year?

Answer:

The SDEM is extracting the inactive staff to close out any prior year records. There is logic in Aeries to close out any staff records from the prior year. After 2 years, the SDEM will not extract the records.

However, If you do not want the records to be extracted, you can do so by

- Changing the School code to 0.
- Entering a Leave Date.
- Removing the FTE.
- Removing the Position Status.
- Inactivating the staff record.
- Removing Job Assignments.



Staff Data (STF)

| | | | | |
|---------------------------------------|-------------------------|------------------------|---------------------------|--------------|
| Last Name | First Name | Middle Name | Suffix | Title |
| Smith | Sam | | | |
| Staff ID | State ID | District | Human Resources ID# | |
| 19785 | 97826451 | Change to 0 - District | Change Status to Inactive | |
| Primary School | Sex | Birthdate | Birth Yr | Status |
| 997 - Eagle Alternative Education Sch | M | 05/02/1982 | 1979 | |
| Address | City | State | Zipcode | Extn |
| | | CA | | |
| Email Address | Alternate Email Address | | | |
| smiths@example.com | | | | |
| Internal Ext. | Primary Phone | Alternate Phone | Ext | Mobile Phone |
| | | | | |
| Notification Preference | Emergency Contact | | Contact Telephone | |
| General and Emergency Ar | | | | |

Total Years of Edu Service: 0
Total Years in This District: 0

Hire Date: 09/12/2015
Leave Date: Enter a leave date

Position Status: Tenured
Time% (FTE): 0
Change FTE to 0

Education Lvl: Master's degree
Yr Degree: 0

Previous Last Name: Previous First Name: Previous Middle Name:

Ethnicity: N
Race: Hawa
Race 2: Race 3: Race 4: Race 5:

TB Test Date: Result: Millimeters: TB Test Type: TB Test Expiration:

Usr1: Usr2: Usr3: Usr4: Usr5: Usr6: Usr7: Usr8:

Not A: Comment:

WRAP UP

Document Links:

SPRG FAQs:

<https://support.aeries.com/support/solutions/articles/14000128136-sprg-faqs#top>

Aeries Users Groups:

<https://www.aeries.com/contact>

SSID Match Tool

<https://support.aeries.com/support/solutions/articles/14000067772-calpads-extracts-identifier-tab-ssid-match-process>

GMA

<https://support.aeries.com/support/solutions/articles/14000143143-ssid-identifier-match-tool-05-12-23>

Manual Process

<https://support.aeries.com/support/solutions/articles/14000137941-calpads-extracts-ssid-matching-tool>

Summer ELPAC

<https://support.aeries.com/support/solutions/articles/14000130532-calpads-extracts-summer-elpac-testing-tab>

Known Issue with Summer ELPAC

<https://support.aeries.com/support/discussions/topics/14000012047>

Aeries Idea

<https://ideas.aeries.com/forums/925735-aeries-ideas/suggestions/46901344-calpads-summer-elpac-testing-tab-adjust-to-work>

CALPADS EOY Reports & Certification

<https://csis.fcmat.org/document/CALPADSResources/EOY-1-Reports-and-Certification.pptx>

CALPADS EOY Reporting Roadmap

<https://documentation.calpads.org/Training/EOYReportingRoadmap/#end-of-year-1-submission>



Ask Aeries

THANK YOU!

Please take a moment to complete our session survey.

[Ask Aeries! CALPADS Survey](#)

